

Collaborative Housing Research Network



SUMMER 2023 NEWSLETTER

We're pleased to release our first joint newsletter between the Balanced Supply of Housing Node and the Housing Assessment Resource Tools project. These newsletters (mailed quarterly) provide updates on the research and activities of both projects.

Balanced Supply of Housing Updates



BSH Spring Workshop

The BSH team met for the first time at a 3-day workshop in Montreal, Quebec:

The BSH team held their first in-person event in Montreal, Quebec from May 1-3, 2023. This event brought students, staff, community-based housing researchers, and policymakers together to continue the discussions on addressing the housing crisis in Canada, with a special focus on Montreal, QC, Toronto, ON, and Vancouver, BC. This event engaged in panel presentations and discussions, breakout sessions on evictions and financialization, and CLTs, as well as exploring student posters. Specific attention throughout the event was to engage in conversations around the current research on the housing crisis and the direction of where resources need to be allocated to address the changes that need to happen to create a balanced supply of housing. Thank you to everyone who made the BSH

2023 Workshop a success and the BSH is eager to engage with the outputs from the discussions had from the workshop.

More updates coming soon!

BSH Outputs

The BSH team has been busy! Take a look at two of our latest reports:



Balanced Supply of Housing
Academic / Community Partnership

ESTIMATING NO-FAULT EVICTIONS IN CANADA:

Understanding BC's Disproportionate Eviction Rate in the 2021 Canadian Housing Survey

Silas Xuereb
Craig Jones, Associate Director,
Housing Research Collaborative,
UBC.

May, 2023



Infographic content taken from: Case, C., Montgomery, N. (2023). Partna II: Comparative Analysis Between Partna and Solidarity Housing. Balanced Supply of Housing Research Cluster.

PARTNA II REPORT

PARTNA AND SOLIDARITY HOUSING

Partna and Solidarity Housing are exploring the feasibility of a new scatter housing model that will add housing affordable units to single and semi-detached properties. properties.

Both Partna and Solidarity Housing are creating financial tools and processes to generate affordable housing in the missing middle scale.

Using survey results, each model found that there was a **high degree of interest**. As well, both projects found the most desired model for adding affordable housing units was laneways or Accessory Dwelling Units.

PARTNA HOUSING

TORONTO, ONTARIO

Partna Housing is focusing on leveraging investment to create a new affordable housing supply.

Key Insights:

Social Connections and Interest

- many residents expressed a desire to feel more connected with their neighbours
- most were interested in collaborating with Partna in some capacity

Financial Arrangements

- monthly payments were highly desired as a financial arrangement, with most respondents motivated by the ability of the payments could support their mortgage costs
- on-time lump sum payments were also desired

Housing Development

- construction of laneway suites and garden suites were the most appealing additional affordable housing options

Estimating no-fault evictions in Canada: Understanding BC's disproportionate eviction rate in the 2021 Canadian housing survey

This report uses data from the 2021 Canadian Housing Survey (CHS) to update estimates of eviction rates across Canada, examine the reasons for eviction reported by current tenants, and estimate changes in eviction rates during the COVID-19 pandemic.

In this report, Silas Xuereb and Craig Jones find that 85% of evictions reported by renter households in British Columbia in the five years prior to data collection were no-fault evictions,

Partna in Solidarity - Phase II: Exploring the Scattered Land Trust Mode in Toronto and Vancouver

The aim of this project is to explore the feasibility of a new scattered housing model that will add affordable units to single and semi-detached properties.

This report includes survey analyses of community housing needs and a look into the Partna and Solidarity Housing pilot projects. Both pilot projects are pursuing the use of financial tools and processes to generate affordable missing middle housing— Partna is based in

compared to only 65% nationally, indicating a trend of financially-motivated evictions.

Toronto, Ontario, and Solidarity Housing is based in Vancouver/Victoria, British Columbia.

[Read Here](#)

[Learn More](#)

Working towards a Balanced Supply of Housing

The BSH Node's co-investigators, community partners, and collaborators have engaged in meaningful research over the past year to tackle the complex problem of rising housing unaffordability in Canada. Here are two projects that aim to mobilize our work:



Research in Progress Webinar Series:

A crisis has emerged in housing across Canada, especially in major urban centres, with rampant homelessness and significant mismatches between housing costs and average incomes. Balanced Supply of Housing researchers are taking a deep dive into housing policies, evictions, national occupancy standards and so much more. In our webinar series, we give you an inside look into 6 on-going research studies.

[Register Here](#)

Spacing Overhead Podcast – Housing Series

Last year, BSH investigators and community partners collaborated with the Spacing Overhead Podcast and launched a 4-part podcast series. This year, we're so excited to announce that we will be collaborating on 4 more episodes!

The first episode of our BSH x Spacing 2023 Housing Series, looks into evictions, housing supply, and tenant rights.

[Listen Here](#)

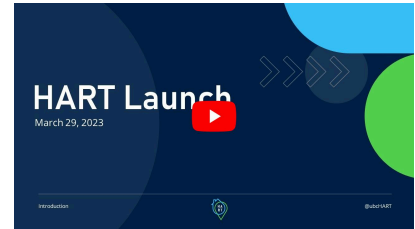


Launch event: March 29

We released our tools (and our new website!) publicly for the first time in March. *Miss the event?* Watch the recording [here](#).

Browse through our website and all the HART tools at

hart.ubc.ca.

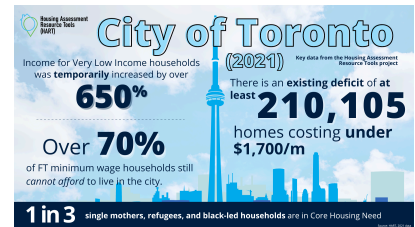


New: Property Acquisition How-To Guides

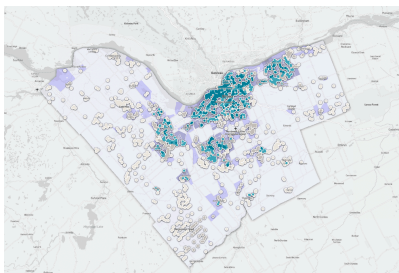
Following our [report](#) on property acquisitions in Canada and globally, our guides break down the **six best practices** for acquisitions policy and breaks them down into steps for every level of government.

2021 data

Our first releases of 2021 data have been published with more cities across Canada coming soon before updating our tool with communities nationwide next month.



[View 2021 data here](#)



Get a Land Assessment for your community

We are now welcoming expressions of interest from municipal or regional governments and agencies, as well as organizations that wish to have a [HART Land Assessment map](#) available for their community.

[Get in touch](#)

Supporting Communities with HAF

Our team has recently been funded by CMHC to support communities across the country with proposals for the \$4B [Housing Accelerator Fund](#). If your community is thinking of submitting a funding proposal, get in touch!



[Get in touch](#)

Recent HART events



Resources to help you meet your community's housing needs

A webinar with CHRA on the HART project and recent updates to the tools.

[Watch recording](#)



It's Political: What will it take to fix Canada's housing crisis?

Listen to HART's Carolyn Whitzman and other housing advocates discuss Canada's Housing Crisis and how we can solve it.

[Listen here](#)



Scaling Up Affordable Housing: Inspiration from Canada and Abroad

A webinar with First United Church and CHEC on how the City of Hamilton can learn from housing policy around the world.

[Watch recording](#)



Housing Assessment Resource Tools (HART)



Balanced Supply of Housing

Academic / Community Partnership